



Package Contents

- Cable/DSL VPN Router
- Setup CD-ROM with User Guide and Norton Internet Security
- Category 5 Ethernet Network Cable
- Quick Installation

EtherFast® Cable/DSL VPN Router

with 4-Port 10/100 Switch
Quick Installation



1 Getting to know the Router

A The Back Panel

The Router's ports and the Reset button are located on the back panel of the Router.

Internet This port connects to your cable or DSL modem.

1-4 These four ports connect to network devices, such as PCs, print servers, or additional switches.

Reset If the Router is having problems connecting to the Internet, press the Reset button for just a second with a paper clip or a pencil tip, which is similar to rebooting your PC. If you are experiencing extreme problems with the Router and have tried all other troubleshooting measures, press and hold in the Reset button for 30 seconds. This will restore the factory defaults and clear all of the Router's settings, such as port forwarding or a new password.

Power This port is where you will connect the power adapter.

B The Front Panel

The Router's LEDs, which inform you about network activities, are located on the front panel.

Power Green. This LED lights up when the Router is powered on and flashes when the Router is running a diagnostic test.

Ethernet Green. This LED shows when the Router is connected to a device through the corresponding port (1, 2, 3, or 4) and flashes when the Router is sending or receiving data over that port.

Internet Green. This LED lights up when the Router is connected to your cable or DSL modem.



2 Connect the Router

Now that you're familiar with the Router, follow these instructions for quick installation.

A Before you begin, make sure that all of your hardware is powered off, including the Router, PCs, hubs, switches, and cable or DSL modem.

B Connect one end of an Ethernet network cable to one of the numbered ports on the back of the Router. Connect the other end to an Ethernet port on a network device, e.g., a PC, print server, hub, or switch.

Repeat this step to connect more PCs or other network devices to the Router.

C Connect your cable or DSL modem's Ethernet cable to the Router's Internet port.

D Power on the cable or DSL modem.

E Connect the included power adapter to the Router's Power port, and then plug the power adapter into an electrical outlet.

The Power LED on the front panel will light up as soon as the power adapter is connected properly.



3 Configure the Router

In Step 3, you will need the setup instructions provided by your Internet Service Provider (ISP). If you do not have this information, then contact your ISP before proceeding.

The instructions from your ISP tell you how to set up your PC for Internet access. Because you are now using the Router to share Internet access among several computers, you will use the setup information to configure the Router instead of your PC.

NOTE:: Make sure your PC's Ethernet adapter is set to *obtain an IP address automatically*. For more information, refer to Windows Help.

A Open your PC's web browser. Enter **http://192.168.1.1** (the Router's default local IP address) in the web browser's *Address* field. Then press the **Enter** key.

B A screen will appear and ask you for a User Name and Password. Leave the *User Name* field empty, and enter **admin** (the default) in the *Password* field. Then click the **OK** button.

C The Router's Web-based Utility will appear with the *Basic Setup* screen showing.



D In its drop-down menu, the Internet Connection Type setting features six Internet connection types: obtain an IP automatically (DHCP), Static IP, PPPoE, RAS, PPTP, and Heart Beat Signal. Depending on which connection type you select, the features available on the *Basic Setup* screen will differ. Proceed to the instructions for the connection type you are using.

1 Obtain an IP Automatically (DHCP)

- a** If your ISP says that you are connecting through DHCP or a dynamic IP address from your ISP, then select **Obtain an IP automatically** as the Internet Connection Type.
- b** Click the **Save Settings** button, and go to Step E.

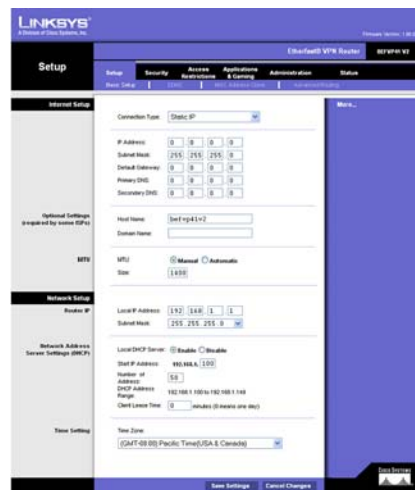
D1



2 Static IP

- a** If your ISP says that you are connecting through a static or fixed IP address from your ISP, then select **Static IP** as the Internet Connection Type.
- b** Enter the IP Address, Subnet Mask and Gateway Address provided by your ISP.

D2



- c** In the *Primary* and *Secondary DNS* fields, enter the DNS address(es) provided by your ISP. You need to enter at least one DNS address.

- d** Click the **Save Settings** button, and go to Step E.

3 PPPoE

- a** If your ISP says that you are connecting through PPPoE or if you normally enter a user name and password to access the Internet, then select **PPPoE** as the Internet Connection Type.
- b** Enter the User Name and Password provided by your ISP. (Also enter the Service Name, if required.)

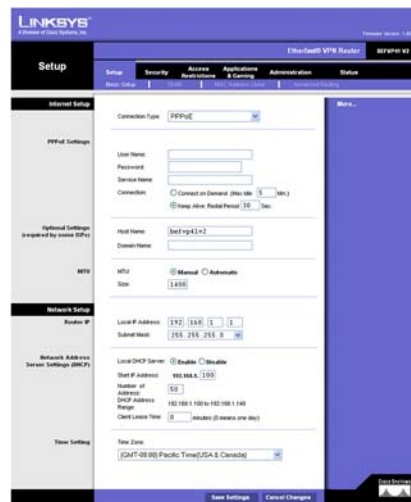
- c** Click the **Save Settings** button.
- d** Click the **Status** tab, and then click the **Connect** button to start the connection.

- e** Go to Step E.

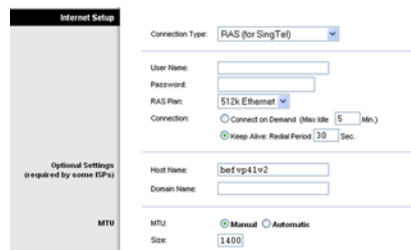
4 RAS

RAS is a service used in Singapore only. If you are using a RAS connection, check with your ISP for the necessary setup information. When you are finished, go to Step E.

D3



D4



5 PPTP

PPTP is a service used in Europe and Israel only. If you are using a PPTP connection, check with your ISP for the necessary setup information. When you are finished, go to Step E.

6 Heart Beat Signal

Heart Beat Signal is a service used in Australia only. If you are using a Heart Beat Signal connection, check with your ISP for the necessary setup information. When you are finished, go to Step E.

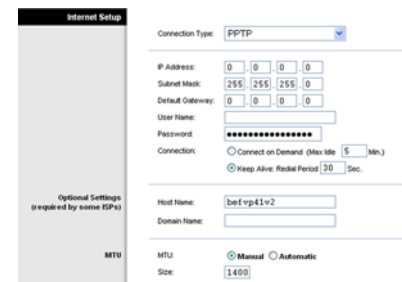
- E** Depending on the setup information from your ISP, you may need to provide a host name and domain name for the Router. The *Host Name* and *Domain Name* fields are usually left blank. If requested by your ISP (usually cable ISPs), complete these two fields.

- F** If you haven't already done so, click the **Save Settings** button. Then close the web browser.

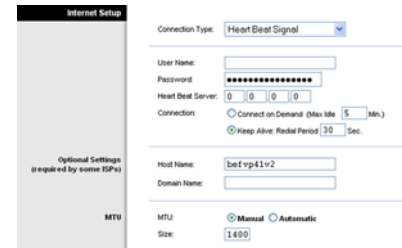
- G** Power your cable or DSL modem off and back on again.

- H** Restart or power on your PCs so they can obtain the Router's new settings.

D5



D6



- I** To test the Router's settings, open your web browser from any computer. In the browser's Address field, enter www.linksys.com/registration and press the **Enter** key.

Congratulations! The installation of the Router is complete.

Address <http://www.linksys.com/registration/>

LINKSYS[®]

A Division of Cisco Systems, Inc.

For additional information or troubleshooting help, refer to the User Guide on the Setup CD-ROM. You can also call or e-mail for further support.

24-hour Technical Support
800-326-7114
(toll-free from US or Canada)

E-mail Support
support@linksys.com

Website
<http://www.linksys.com> or
<http://support.linksys.com>

RMA (Return Merchandise Authorization)
<http://www.linksys.com/support>

FTP Site
<ftp://ftp.linksys.com>

Sales Information
800-546-5797 (800-LINKSYS)

Linksys is a registered trademark or trademark of Cisco Systems, Inc. and/or its affiliates in the U.S. and certain other countries. Copyright © 2003 Cisco Systems, Inc. All rights reserved.